



Jeep Grand Cherokee WK2

2011-2021

Rock Sliders Rail only

IMPORTANT! – READ BEFORE INSTALLATION

- This product must be installed exactly as per these instructions using only hardware supplied.
- Take a few moments to read instructions thoroughly before beginning work.
- In the event of damage to any component please contact OFFROAD ANIMAL to arrange repair/replacement of components.
- Do not use this product for any vehicle make or model other than that specified on these instructions.
- Do not remove labels from this product.
- This product and its fixings must not be modified in any way unless stated in these fitting instructions.
- The installation of this product is recommended for trained personnel.
- These instructions are correct at time of publication. OFFROAD ANIMAL cannot be held responsible for the impact of any changes subsequently made by the vehicle manufacturer. If you find something has changed please contact us to let us know!
- During installation it is the duty of the installer to check correct operation/clearances of all components.
- If Instructions are to be printed for reference in the workshop, it is recommended that they are printed in colour, for best legibility.
- Fitting Time: 2-3 hours

GENERAL CARE AND MAINTENANCE

Only wash the product with a PH neutral car wash to prevent paint damage and discolouration.

Plastic parts may be maintained with silicone spray.

Do not use acidic or alkaline based cleaning products.

It is important to perform regular checks (pre trip or on an annual basis) on the installed product. Checks include:

- Visual inspection for damage (eg. cracks, chips, dents etc.)
- Electrical wiring is not rubbing anything or worn out
- Bolts are torqued to correct specification (see torque guide below)

For touching up small stone chips, Offroad Animal recommends the following paint products:

- Dupli-Color Trim & Bumper Paint Black (TB101)
- VHT Hood, Bumper & Trim Paint Black (SP27)

BOLT TORQUE SETTINGS

Use the following bolt torques on all general fasteners, unless otherwise specified.

GENERAL FASTENERS	
Size	Torque Nm
M5	5 Nm
M6	9 Nm
M8	22 Nm
M10	44 Nm
M12	77 Nm

Use the following bolt torques on all structural front bar mount and tow point fasteners, and rear towbar fasteners, unless otherwise specified.

FRONT BAR MOUNTS AND TOW POINTS + REAR TOWBAR	
Size	Torque Nm
M10	57 Nm
M12	100 Nm
M14	164 Nm
M16	248 Nm

Always use a torque wrench to set correct torque settings. Ensure torque wrench is set to Nm unit of measurement. Otherwise perform conversion to lb-ft.

PARTS LISTING

IMPORTANT: Check all parts are present before beginning work! Contact OFFROAD ANIMAL if something is missing.

Main Parts – In the Box

Qty	Part Number	Description	Image
1	B-0080R	Wk2 Slider no step RH	
1	B-0080L	Wk2 Slider no step LH	

Small Parts – Contained in Small Parts Kit Bag

Qty	Part Number	Description
12	NP-COM-M10-190-ASM0	M10 Lollypop Nut Plate
2	OFA-Logo	Offroad Animal Metal Logo plate
12	M6x16 BHCS B/Z	M6 x 16 Button Head Cap Screw Black Zinc
12	M6 FW B/Z	M6 Flat Washer Black zinc
12	M6 NUTSERT	M6 NUTSERT
12	M10 X 30	M10 X 30 HEX BOLT ZP 8.8
12	M10 FW	M10 FLAT WASHER

TOOLS REQUIRED

The following tools will be required to install the product.

Hand Tools	Power Tools	Workshop Equipment
<ul style="list-style-type: none">-16 or 5/8 Spanner-4mm Allen Key--Nutsert Gun-Centre punch-9mm Drill bit (or imperial equivalent)-13mm Drill Bit or equivalent-Flat Screw driver or trim tool-Paint Pen or equivalent-Caulking gun	<ul style="list-style-type: none">Power Drill	<ul style="list-style-type: none">-Trolley, bottle, or scissor Jack-Nutsert Gun-Silicon sealant

WORKSHOP SAFETY

It is the responsibility of the installer to always complete works in a safe manner. Make sure the following safety equipment is available and precautions are observed whilst fitting this product.

<p>Hearing Protection</p> 	<p>Always wear ear protection when using power tools.</p>
<p>Eye Protection</p> 	<p>Ensure eye protection is always worn when cutting or drilling.</p>
<p>Manual Handling</p> 	<p>Do not attempt to lift bar assemblies or rock sliders on your own.</p> <p>Always use two people to lift or use mechanical Lifting aid such as hydraulic lifting trolley.</p>
<p>Vehicle Support</p> 	<p>Always ensure vehicle is properly supported when working on it. Do not attempt to fit products whilst suspension work is being carried out. Do not work under a vehicle supported only by a jack.</p>



1. Using your trim tool or flat head screw driver remove plastic rivets holding ends of plastic trim on.
2. Remove M6 screw with 10mm spanner.
3. Remove plastic rivets on underside as well.

If mud flaps are fitted retain hardware to reinstall

TOOLS REQUIRED

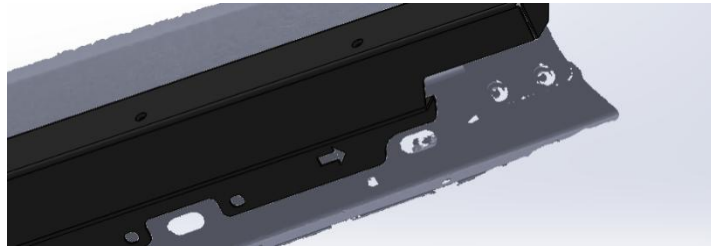
Trim tool, or flat head screw
driver
10mm spanner

FASTENERS

Discard plastic rivets
Retain any bolts/screws



4. Pry off plastic trim.	TOOLS REQUIRED Use hand or pry tool
	FASTENERS



5. Using a jack lift the slider up to body of the Jeep. Line it up centrally front to back. See pull out picture above showing cut outs lined up with large oval holes in body. Make sure the laser cut arrow in slider faces forward.

TOOLS REQUIRED

Jack

FASTENERS



6. Mark all holes to be drilled on the side (6) and underneath (6)
7. Remove slider away from Jeep.

TOOLS REQUIRED

Paint pen or equivalent

FASTENERS



8. Centre punch all marked holes.

TOOLS REQUIRED

Centre Punch

FASTENERS



<div>9. Drill out all marked holes. Holes on sides to 9mm (or imperial equivalent.) A 5mm pilot hole will make this step easier.</div> <div>10. Holes on underside are clearance for M10 bolt. Offroad Animal suggests 13mm but anything between 10mm-13mm will work. A 5mm pilot hole will make this step easier.</div> <div>11. Paint all drilled edges to prevent rusting.</div>	<div>TOOLS REQUIRED</div> <div>Power Drill 9mm Drill bit 13mm drill bit and if you want a 5mm drill bit.</div> <div>Paint Pen</div>
	<div>FASTENERS</div>



12. Install 6x M6 Nutserts in side of Jeep,

TOOLS REQUIRED

Nutsert Gun

FASTENERS

M6 Nutserts (6)



13. Lift Slider back on to Jeep and secure with M6 Button head cap screws into side of jeep. Leave these loose.

TOOLS REQUIRED

4mm Allen Key
Jack

FASTENERS

M6x16 BHCS (6)



14. Remove rubber bungs on underside.
15. Position in M10 lollipop nut plate and secure with M10 bolts. Leave loose.
16. Either cut off or push stems of nut plates into body and push rubber bungs back into place

TOOLS REQUIRED

16mm socket or spanner
Pry tool

FASTENERS

M10 x 30 Hex bolt (6)
M10 Flat Washers (6)
M10 Lollipops (6)

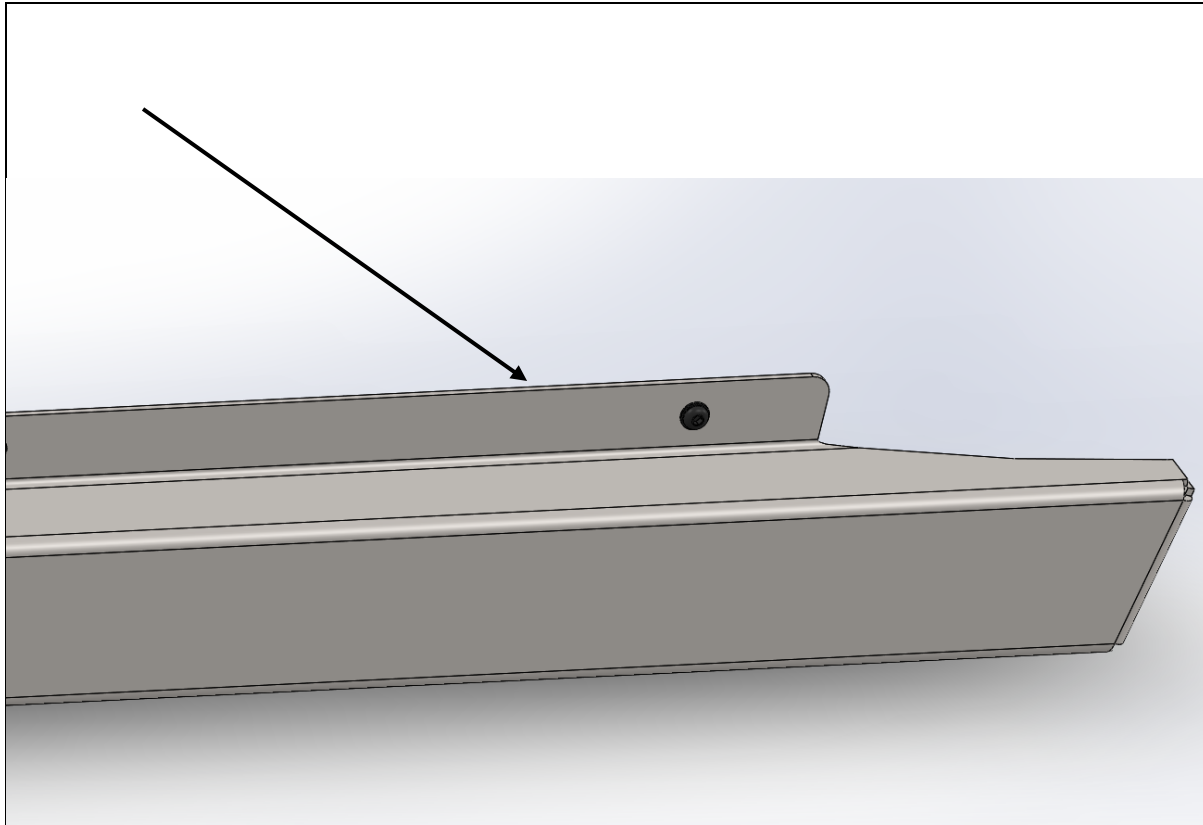


17. Once all bolts have been started, Torque down each bolt and screw.	TOOLS REQUIRED 4mm Allen key 16mm Socket
	FASTENERS



18. Peel off backing and stick logo plate on slider.

TOOLS REQUIRED**FASTENERS**



19. Run a bead of Silicone along top edge of slider to prevent debris falling and settling behind slider.

TOOLS REQUIRED

Caulking Gun
Silicone Sealant

FASTENERS



20. One side is finished, repeat for other side.

You're all done now, enjoy the extra protection.

TOOLS REQUIRED**FASTENERS**